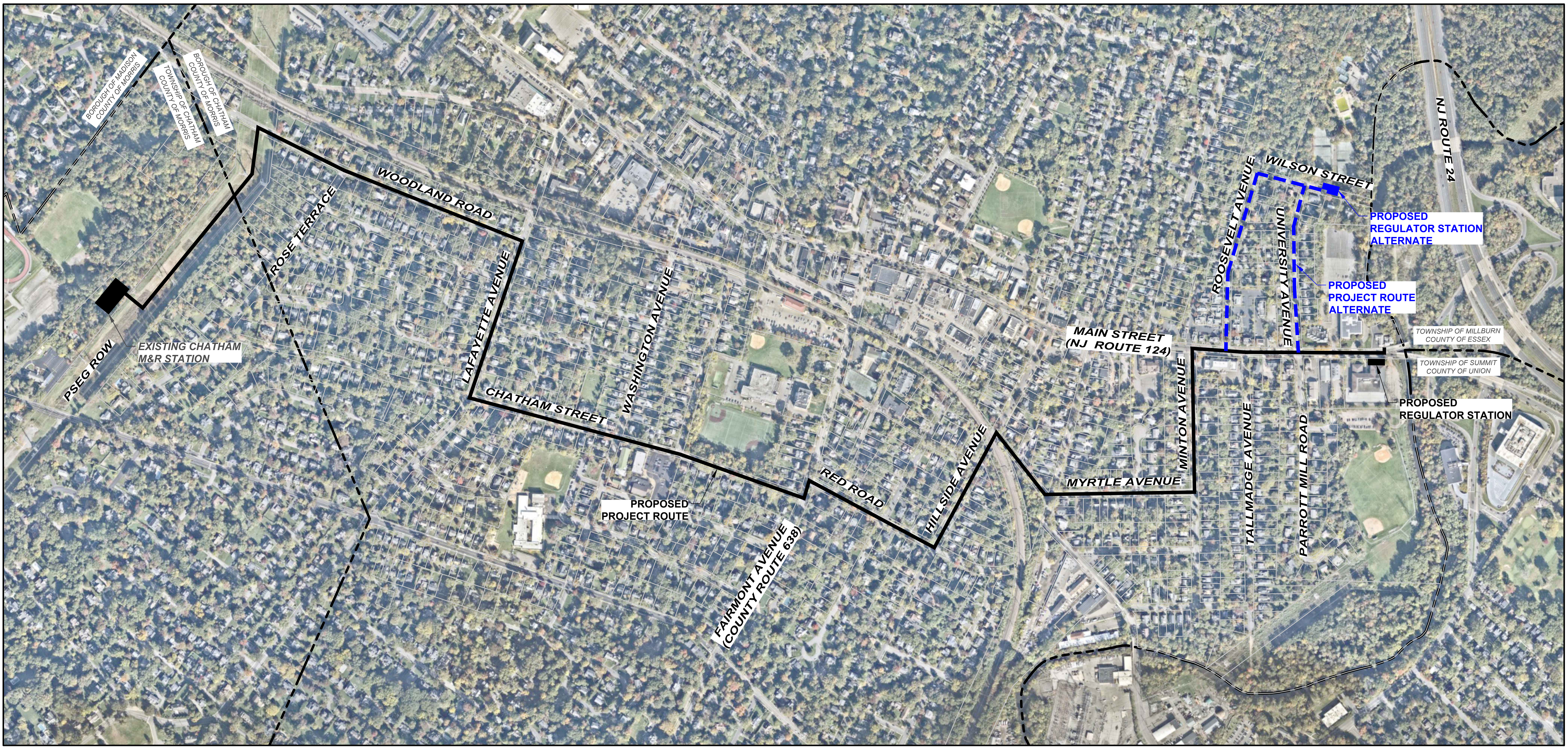


CHATHAM GAS SYSTEM REINFORCEMENT  
VARIOUS MUNICIPAL ROADS  
BOROUGH OF CHATHAM

COUNTY OF MORRIS                      NEW JERSEY



SOURCE: NJGIN

KEY MAP



SCALE: 1"=300'

**NOTICE**  
THIS DRAWING AND ALL INFORMATION CONTAINED HEREIN IS AUTHORIZED FOR USE ONLY BY THE PARTY FOR WHOM THE WORK WAS CONTRACTED OR TO WHOM IT IS CERTIFIED. THIS DRAWING MAY NOT BE COPIED, REUSED, DISCLOSED, DISTRIBUTED, OR RELIED UPON FOR ANY OTHER PURPOSE WITHOUT THE WRITTEN CONSENT OF SUBURBAN CONSULTING ENGINEERS, INC.  
PER N.J.A.C. ELECTRONIC SUBMISSIONS NOT CONTAINING A VALID DIGITAL SEAL OR PAPER COPIES NOT CONTAINING A RAISED SEAL ARE NOT ORIGINALS AND MAY HAVE BEEN ALTERED.  
© COPYRIGHT 2023 SUBURBAN CONSULTING ENGINEERS, INC.™  
ALL RIGHTS RESERVED



**SUBURBAN CONSULTING  
ENGINEERS, INC.**

COA NO.: 24C-22037500  
2/20/2024

- Civil Engineers - Municipal Engineers -  
- Landscape Architects -  
- Planners - Environmentalists - Land Surveyors -

96 US Highway 206, Suite 101  
Hlanders, NJ 07836 - 973.398.1776  
2430 Highway 34, Bldg. A Suite 1R  
Wall, NJ 08736 - 732.282.1776  
505 Main Street, Suite 314  
Hackensack, NJ 07601 - 201.646.1776

EXCELLENCE ♦ ECONOMY ♦ ENVIRONMENT



**PSEG**

48 MIDDLE AVE

SUMMIT, NJ 07901

PROPOSED GAS MAIN LOCATION PROVIDED BY  
PSE&G

ISSUED FOR PERMITTING PURPOSES ONLY

**CHATHAM GAS SYSTEM REINFORCEMENT  
VARIOUS MUNICIPAL ROADS  
BOROUGH OF CHATHAM**

COUNTY OF MORRIS

NEW JERSEY

COVER SHEET

PROJECT NUMBER:  
SCE-12865.011

PSE&G W.O. NUMBER:  
C.03108.1.1.B.1.2

SHEET: 1 OF 1

SCALE: 1"=300'

REVISION